

TRI-COUNTY RURAL ELECTRIC COOPERATIVE, INC.

5 DAMASCUS STREET
 COUDERSPORT, PENNSYLVANIA 16915
 (814) 274 - 8740

P.O. BOX 134 33 AUSTIN STREET
 WELLSBORO, PENNSYLVANIA 16901
 (570) 724 - 6712

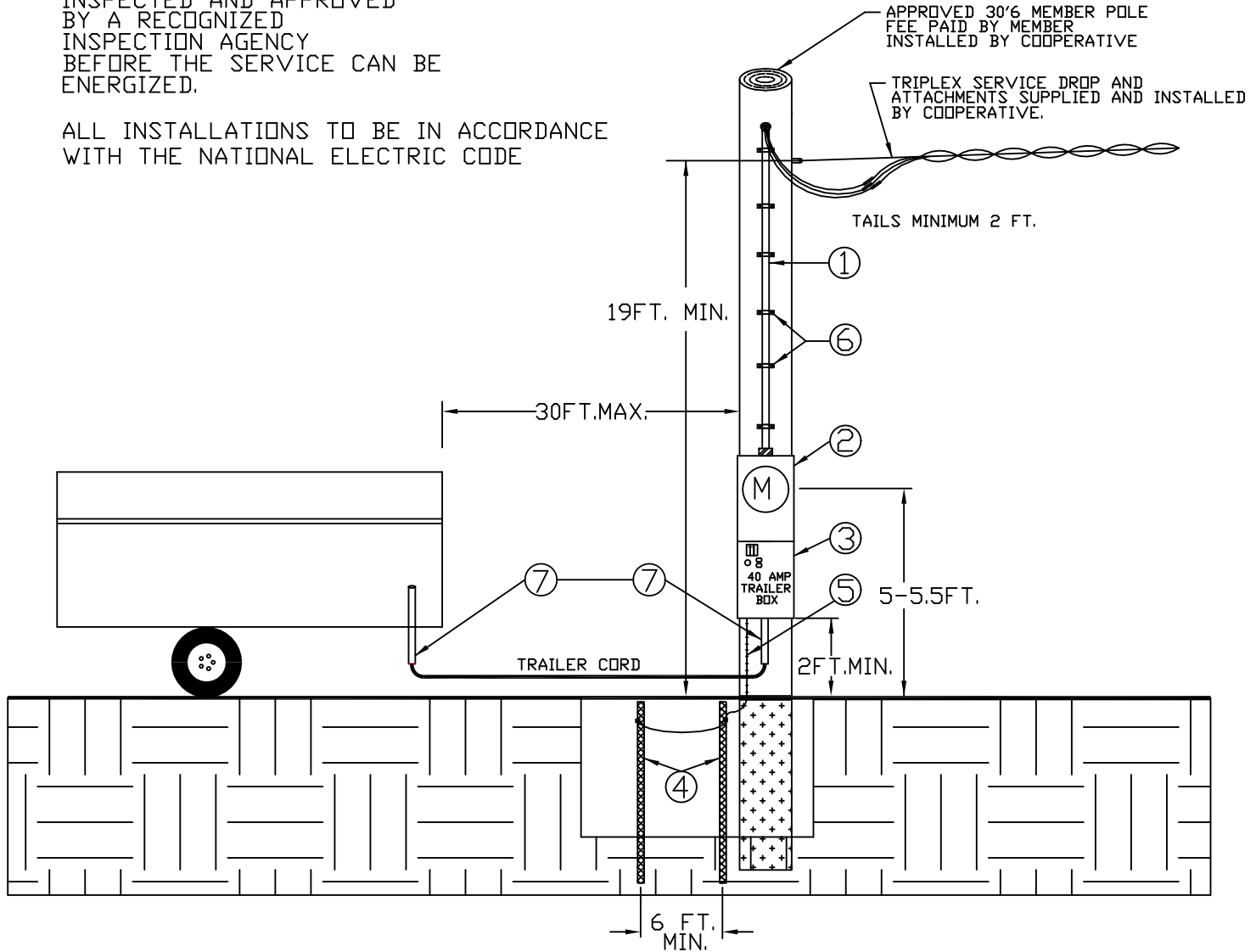
22 NORTH MAIN STREET
 MANSFIELD, PENNSYLVANIA 16933
 (570) 662 - 2175
 1(800) 343 - 2559

INSTALLATION REQUIREMENTS OF POLE MOUNTED SERVICES FOR CAMPER AND RV OR SIMILAR APPLICATIONS.

IMPORTANT:

ALL INSTALLATIONS MUST BE INSPECTED AND APPROVED BY A RECOGNIZED INSPECTION AGENCY BEFORE THE SERVICE CAN BE ENERGIZED.

ALL INSTALLATIONS TO BE IN ACCORDANCE WITH THE NATIONAL ELECTRIC CODE



FURNISHED AND INSTALLED BY MEMBER

- ① ENTRANCE CABLE OR SERVICE ENTRANCE CONDUCTORS IN APPROVED CONDUIT WITH WEATHERHEAD
 100 AMP - # 2 ALUMINIUM OR # 4 COPPER
 200 AMP - 4/0 ALUMINIUM OR 2/0 COPPER
- ② MEMBER OWNED 4 JAW UL APPROVED RINGLESS TYPE METERBASE WITH WEATHER TIGHT HUBS AND BY-PASS HORNS EITHER PURCHASED FROM COOPERATIVE OR ELECTRICAL SUPPLY COMPANY.
- ③ MEMBER OWNED SERVICE EQUIPMENT - MINIMUM 40 AMP WITH GFI 120 VOLT CIRCUIT PROTECTION.
- ④ TWO (2) 5/8 IN. X 8 FT. COPPERWELD OR GALVANIZED GROUND RODS SPACED A MINIMUM OF 6 FT. APART.
- ⑤ GROUND WIRE # 6 BARE COPPER FOR 100 AMP INSTALLATION AND # 4 BARE COPPER FOR A 200 AMP INSTALLATION. WHERE AVAILABLE, SERVICE SHOULD ALSO BE GROUNDED TO WELL CASING OR UNDERGROUND METALLIC WATER PIPING SYSTEM. GAS OR FUEL OIL PIPING SHALL NOT BE USED AS A GROUNDING ELECTRODE. BONDING: SEE N.E.C. ARTICLE 250
- ⑥ CABLE STRAPS TO BE PLACED 6 TO 10 IN. FROM WEATHERHEAD AND METERBASE AND AT THREE (3) FT. INTERVALS.
- ⑦ MEMBER SUPPLIED/INSTALLED CONDUIT IF NEEDED FOR PROTECTION