

TRI-COUNTY RURAL ELECTRIC COOPERATIVE, INC.

5 DAMASCUS STREET
 COUDERSPORT, PENNSYLVANIA 16915
 (814) 274 - 8740

P.O. BOX 134 33 AUSTIN STREET
 WELLSBORD, PENNSYLVANIA 16901
 (570) 724 - 6712

22 NORTH MAIN STREET
 MANSFIELD, PENNSYLVANIA 16915
 (570) 662 - 2175
 1 (800) 343 - 2559

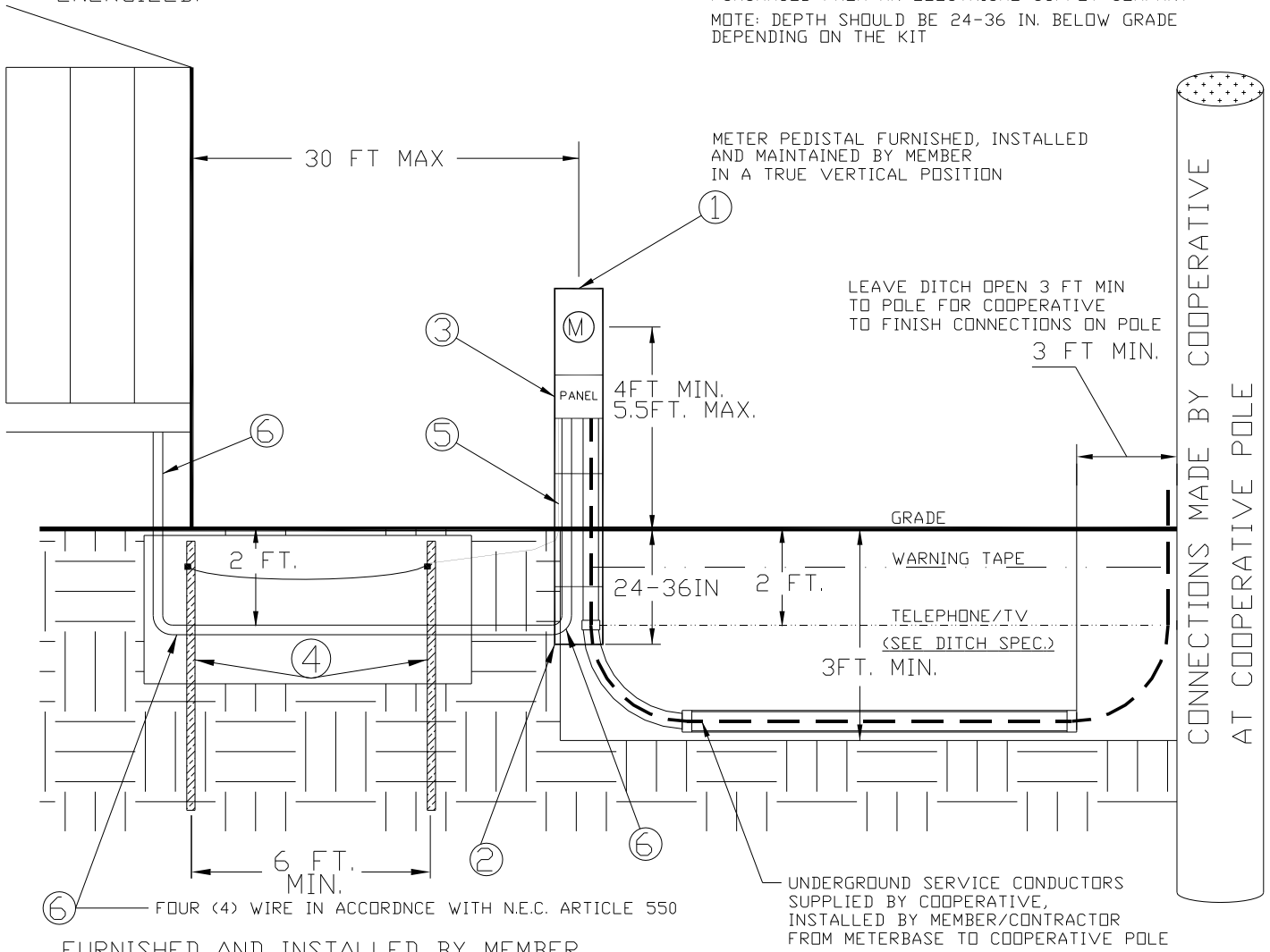
INSTALLATION REQUIREMENTS OF UNDERGROUND PEDESTAL MOUNTED SERVICES FOR MOBILE HOMES AND DOUBLE-WIDE APPLICATIONS

IMPORTANT:

ALL INSTALLATIONS MUST BE INSPECTED AND APPROVED BY THE MUNICIPALITY APPROVED INSPECTION AGENCY (PER UCC CODE) BEFORE THE SERVICE CAN BE ENERGIZED.

ALL INSTALLATIONS TO BE IN ACCORDANCE WITH THE NATIONAL ELECTRIC CODE

PEDESTAL MOUNTING KITS AND THE DIRECT BURIAL KITS, STABILIZER FOOT, PAD MOUNT SLEEVE, OR STAKE PURCHASED FROM AN ELECTRICAL SUPPLY COMPANY
 NOTE: DEPTH SHOULD BE 24-36 IN. BELOW GRADE DEPENDING ON THE KIT



FURNISHED AND INSTALLED BY MEMBER

- ① 100 / 200 AMP METERED WITH MAIN AND BRANCH BREAKER PROVISIONS
 PEDISTAL UNITS AND MOUNTING KITS ACCEPTED WITH UL RATING
INHIBITOR COMPOUND USED ON ALL ALUMINUM WIRE TERMINATIONS
- ② PEDESTAL MOUNTING KITS
 DIRECT BURIAL, STABILIZER FOOT, PAD MOUNT SLEEVE, OR STAKE.
- ③ MEMBER OWNED SERVICE EQUIPMENT - MINIMUM 100 AMP
- ④ TWO (2) 5/8 IN. X 8FT. COPPERWELD OR GALVANIZED GROUND RODS SPACED A MINIMUM OF 6 FT. APART.
- ⑤ GROUND WIRE # 6 BARE COPPER FOR 100 AMP INSTALLATION AND # 4 BARE COPPER FOR A 200 AMP INSTALLATION.
 WHERE AVAILABLE, SERVICE SHOULD ALSO BE GROUNDED TO WELL CASING OR UNDERGROUND METALLIC WATER PIPING SYSTEM.
 GAS OR FUEL OIL PIPING SHALL NOT BE USED AS A GROUNDING ELECTRODE. BONDING: SEE N.E.C. ARTICLE 250
- ⑥ MEMBER SUPPLIED/INSTALLED CONDUIT WITH 4 WIRE CABLE AT MINIMUM DEPTH OF 2 FEET PRIOR TO INSPECTION.